

- ## PAVEMENT MARKING AND SIGNAGE SPECIFICATIONS:
1. ALL SIGNING AND PAVEMENT MARKINGS SHALL BE INSTALLED IN ACCORDANCE WITH THE CITY OF POMPANO BEACH-ENGINEERING STANDARDS.
 2. ALL THERMOPLASTIC PAVEMENT MARKINGS SHALL BE APPLIED IN ACCORDANCE WITH FLORIDA DEPARTMENT OF TRANSPORTATION STANDARD SPECIFICATIONS FOR ROAD AND BRIDGE CONSTRUCTION.
 3. ALL EXISTING PAVEMENT MARKINGS IN CONFLICT WITH PROPOSED DESIGN SHALL BE REMOVED. METHOD OF REMOVAL TO BE APPROVED BY THE ENGINEER PRIOR TO ANY WORK IN THIS AREA.
 4. PROVIDE FOR BLUE REFLECTIVE PAVEMENT MARKERS IN THE CENTER OF THE DRIVE LANE ADJACENT TO EACH FIRE HYDRANT.
 5. PROVIDE FOR RED REFLECTIVE PAVEMENT MARKERS IN THE CENTER OF THE DRIVE LANE ADJACENT TO FIRE DEPARTMENT CONNECTIONS.
 6. ALL EXISTING SIGNS (STOP, SPEED LIMIT, STREET NAMES, SCHOOL, ETC) SHALL BE REMOVED WHERE CONFLICTING WITH CONSTRUCTION ACTIVITIES AND RE-INSTALLED PRIOR TO OPENING ROADWAYS FOR TRAFFIC.
 7. PAVEMENT MARKINGS AND GEOMETRICS SHALL BE IN ACCORDANCE WITH OF MANUAL OF UNIFORM TRAFFIC CONTROL DEVICES FOR STREETS AND HIGHWAYS AND CITY OF POMPANO BEACH DESIGN STANDARDS.

1. ALL ORGANIC OR DELETERIOUS MATERIAL SHALL BE REMOVED FROM WITHIN 5 FEET OF ANY AREA OF PAVEMENT. ANY SUCH MATERIAL SHALL BE REPLACED BY APPROVED GRANULAR FILL WHICH SHALL BE COMPACTED TO 98% OF MAXIMUM DENSITY AS DETERMINED BY AASHTO T-180.
2. STABILIZED SUBGRADE SHALL HAVE A LIMEROCK BEARING RATIO (LBR) OF 40 AND SHALL BE COMPACTED TO 98% OF MAXIMUM DENSITY AS DETERMINED BY AASHTO T-180.
3. LIMEROCK BASE COURSE SHALL CONFORM TO THE REQUIREMENTS OF SECTION 311 OF FLORIDA D.O.T. STANDARD SPECIFICATIONS, EXCEPT THAT THE MINIMUM PERCENTAGE OF CARBONATES OF CALCIUM AND MAGNESIUM SHALL BE 60%.
4. ASPHALTIC CONCRETE TYPE SP-9.5 SHALL CONFORM TO THE REQUIREMENTS OF SECTION 334 OF FLORIDA D.O.T. STANDARD SPECIFICATIONS.
5. PRIME COAT AND TACK COAT FOR BASE COURSES SHALL CONFORM TO THE REQUIREMENTS OF SECTIONS 300-1 THROUGH 300-7 OF FLORIDA D.O.T. STANDARD SPECIFICATIONS. PRIME COAT SHALL BE APPLIED AT A RATE OF 0.25 GALLONS PER SQUARE YARD AND TACK COAT AT A RATE OF 0.08 GALLONS PER SQUARE YARD UNLESS A VARIATION RATE IS APPROVED BY THE ENGINEER.
6. ALL CONCRETE SHALL HAVE A MINIMUM COMPRESSIVE STRENGTH OF 3000 PSI AT 28 DAYS, EXCEPT DRAINAGE STRUCTURES.
7. PRECAST CONCRETE MAN-HOLES AND CATCH BASINS SHALL MEET THE REQUIREMENTS OF A.S.T.M. SPECIFICATIONS C-478 AND 64T.
8. CONCRETE FOR PRECAST MANHOLES AND CATCH BASINS SHALL HAVE MINIMUM COMPRESSIVE STRENGTH OF 4000 PSI AT 28 DAYS.
9. REINFORCING STEEL FOR MANHOLES AND CATCH BASINS SHALL CONFORM TO A.S.T.M. SPECIFICATIONS A-615 AND A-305, LATEST REVISION. GRADE 60 STEEL SHALL BE USED FOR TOP AND BOTTOM SLABS.
10. ALL RE-BAR SPLICES IN CONCRETE STRUCTURES SHALL HAVE A MINIMUM LAP OF 24 BAR DIAMETERS.
11. ALL JOINTS IN CONCRETE STRUCTURES SHALL BE FINISHED WATER TIGHT.
12. ALL SPACES AROUND PIPING ENTERING OR LEAVING MANHOLES AND CATCH BASINS SHALL BE COMPLETELY FILLED WITH 2:1 WATERPROOF, NON-SHRINKING CEMENT MORTAR.
13. HDPE PIPE SHALL BE HI-Q PIPE AS MANUFACTURED BY HANCOCK, INC. OR APPROVED EQUAL.
14. ALL LABOR, MATERIALS AND METHODS OF CONSTRUCTION SHALL BE IN STRICT ACCORDANCE WITH THE MINIMUM ENGINEERING AND CONSTRUCTION STANDARDS ADOPTED BY THE PUBLIC WORKS DEPARTMENT. THE PLANS AND CONSTRUCTION SPECIFICATIONS, WHERE CONFLICTS OR OMISSIONS EXIST, THE BROWARD COUNTY PUBLIC WORKS STANDARDS SHALL DICTATE. SUBSTITUTIONS AND DEVIATIONS FROM PLANS AND SPECIFICATIONS SHALL BE PERMITTED ONLY WHEN WRITTEN APPROVAL HAS BEEN ISSUED BY THE ENGINEER.
15. THE EXISTING ELEVATIONS SHOWN ON THE GRADING PLAN INDICATES THE ELEVATION AT THE POINT DEPICTED ONLY, AND SHOULD NOT BE INTERPRETED AS INDICATING THE ELEVATIONS OF ANY OTHER POINT. THESE EXISTING ELEVATIONS ARE IN NO WAY AN INDICATOR OF SURFACE OR SUBSURFACE SOIL CONDITIONS.

[illegible]

ENGINEERING
SURVEYING
PLANNING

SDA **SHAH**
DROT **DROT**
& ASSOCIATES

Certificate of Authorization No. LB6456
3410 North Andrews Avenue Ext. o Pompano Beach, Fl. 33064
PH: 954-943-9433 o FAX: 954-783-4754

DRAWN BY: MJG

CHECKED BY: JFD

DESIGNED BY: JFD

APPROVED BY: SD

SCALE: 1"=20'

**TAHA MARINE CENTER
RESTAURANT ADDITION
CITY OF POMPAHO BEACH, BROWARD COUNTY, FLORIDA
PAVING, GRADING & DRAINAGE
DETAILS**

FOR THE FIRM:

FOR THE FIRM,
 RY **Matthe** Digitally signed
 w J by Matthew J
 Gian
 Date:
 2021.01.26
 16:12:29 -05'00'
 J. GIAN
 No. 229

RC

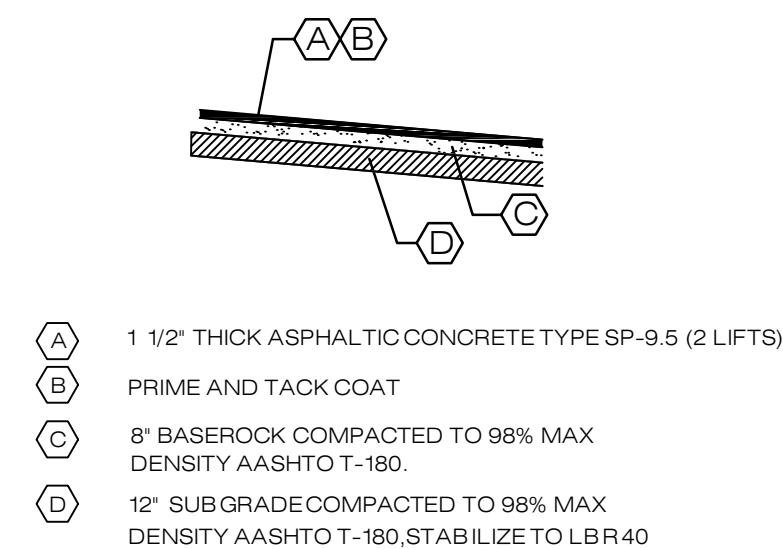
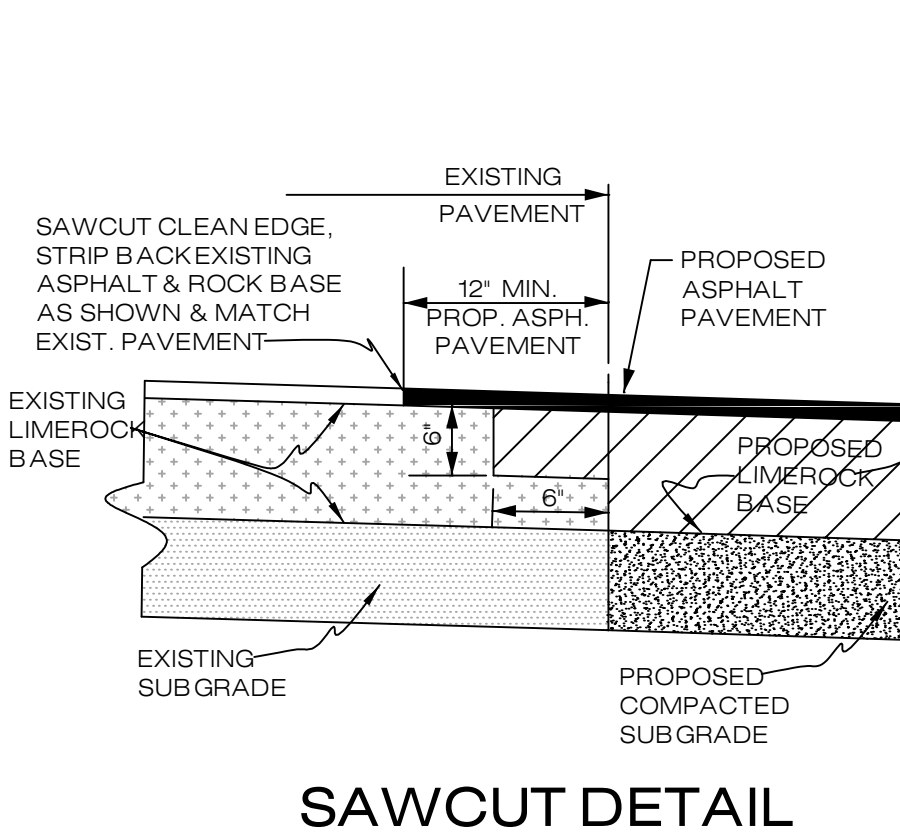
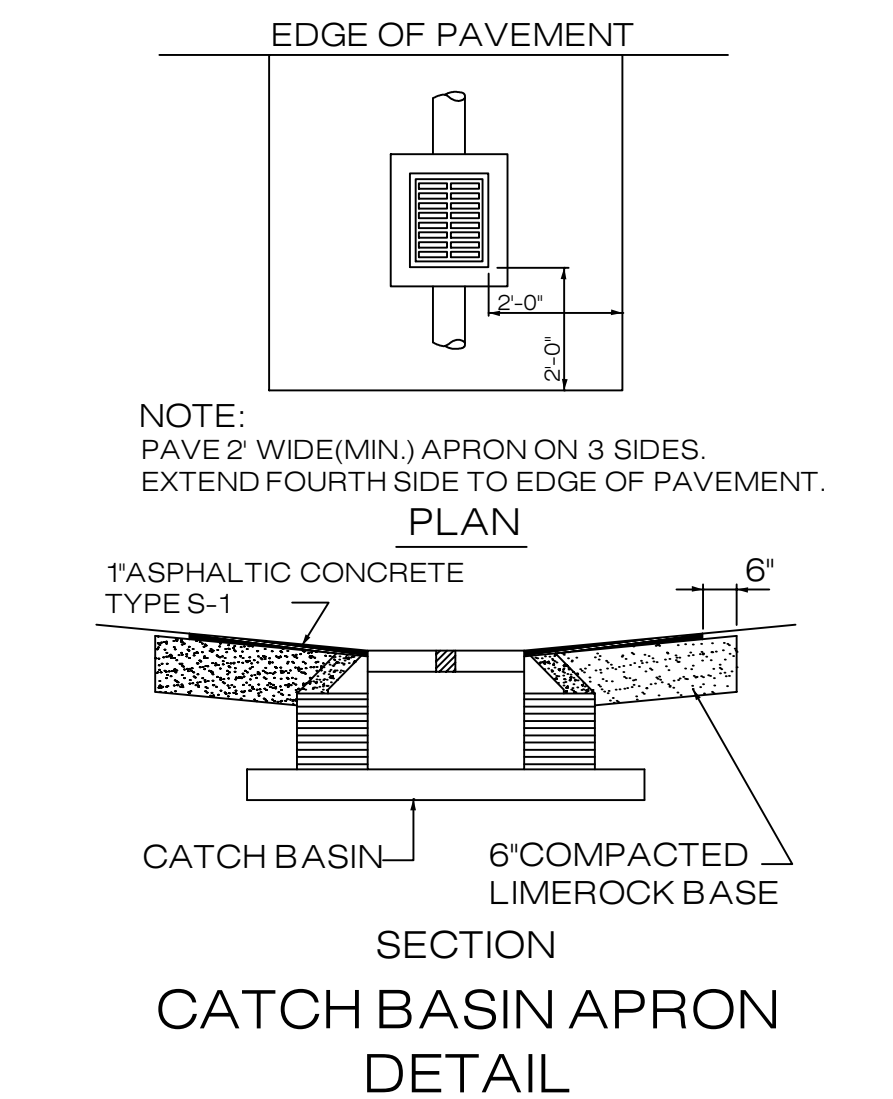
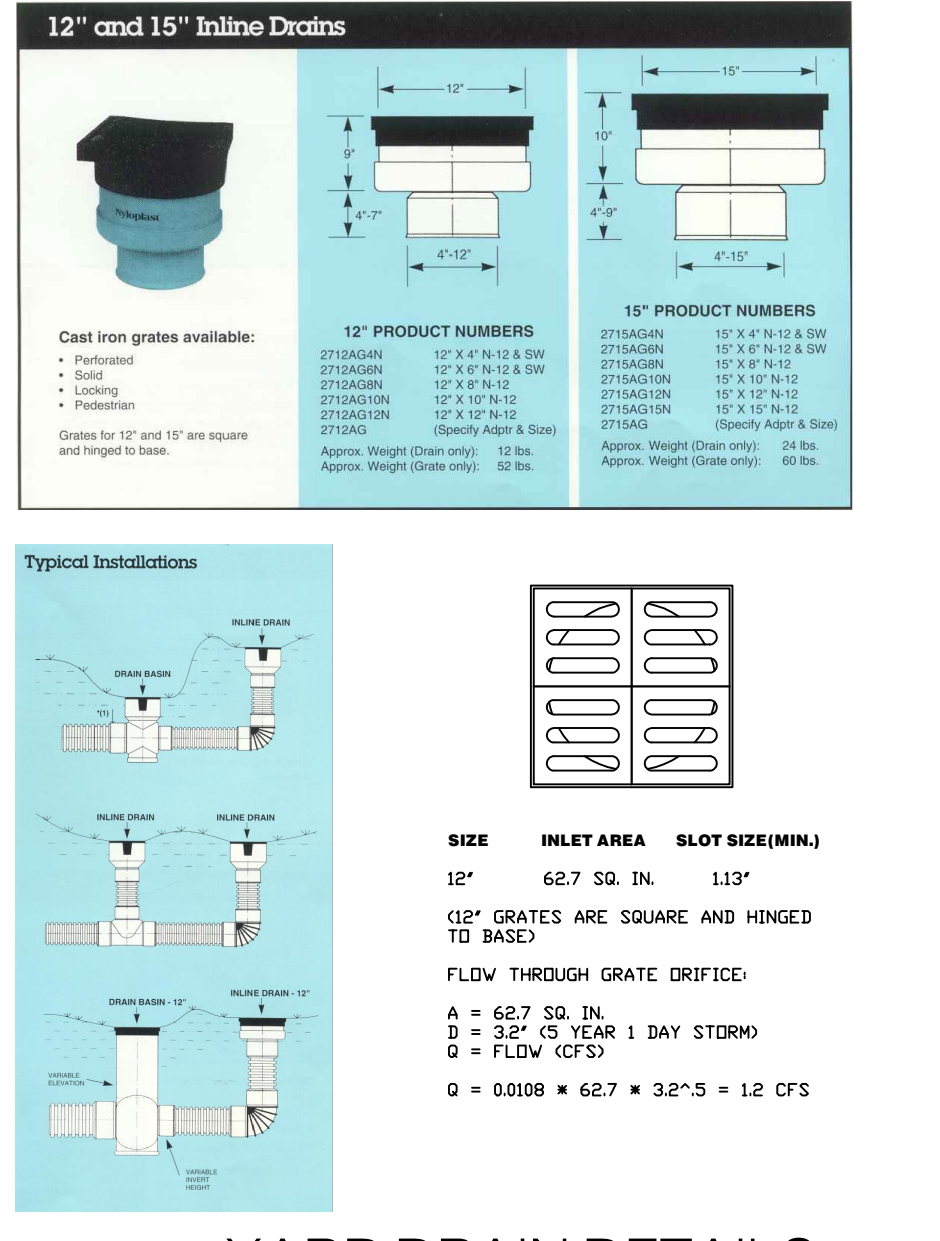
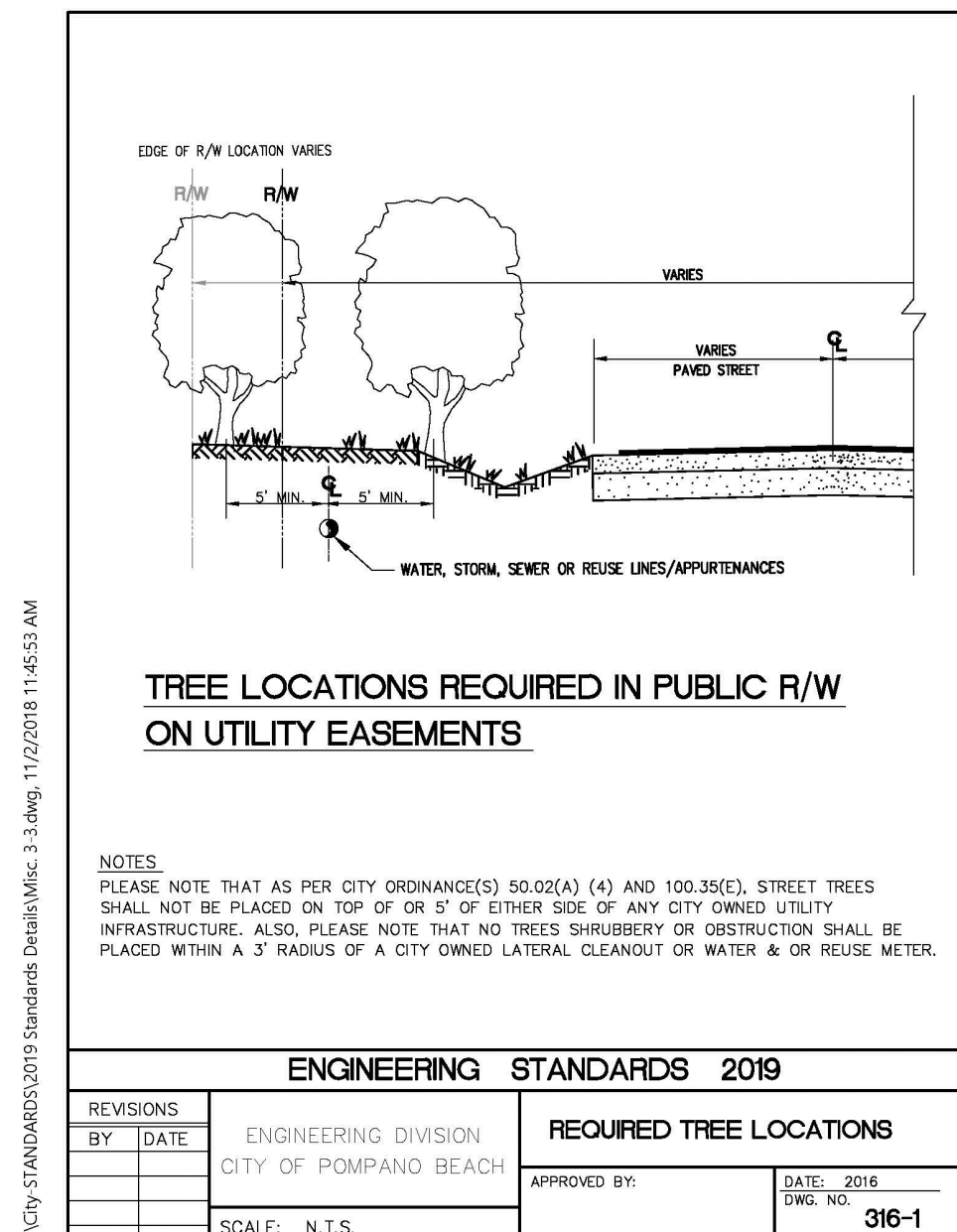
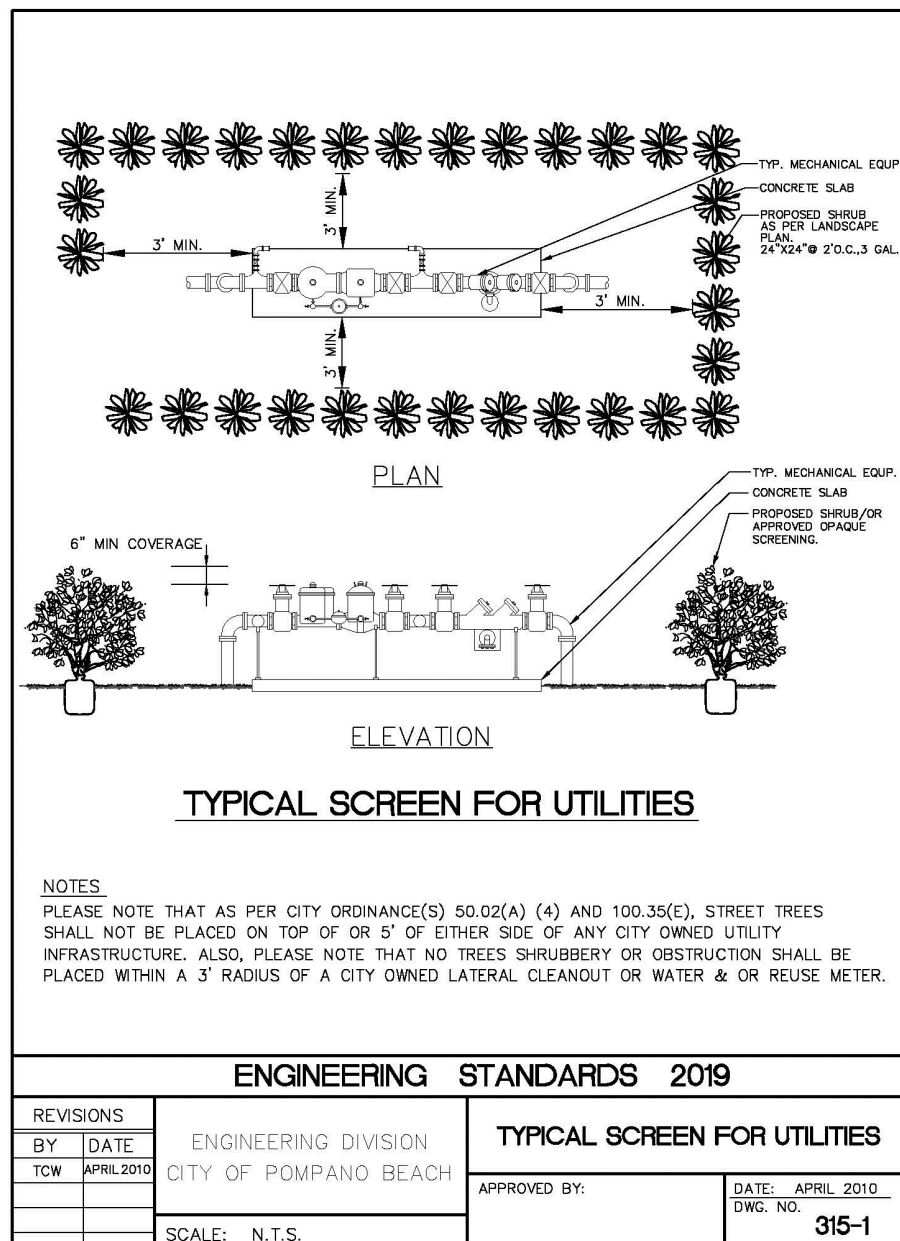
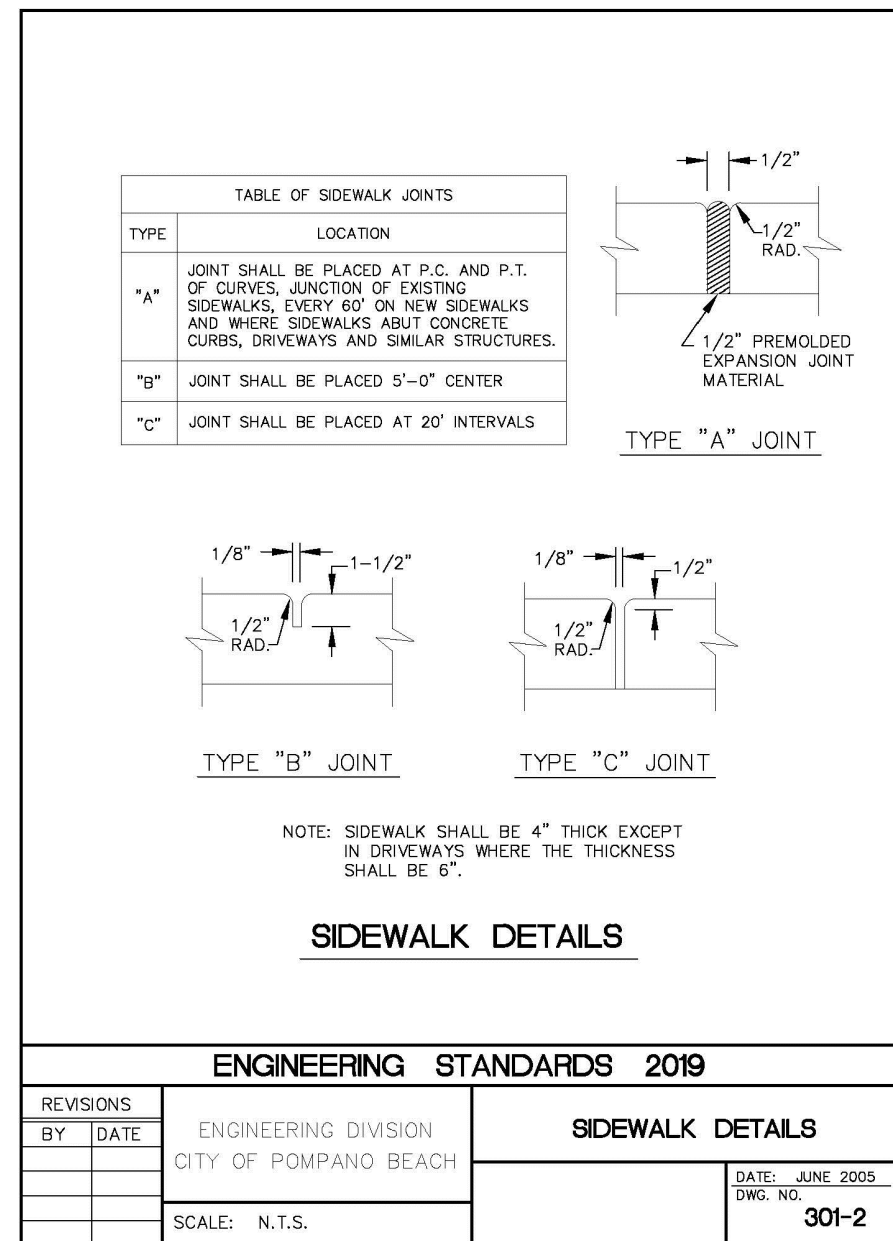
MBER 2020

103A.0

12000051

12000051
7/01

7/21



PAVEMENT SPECIFICATIONS

A large red 'DRC' stamp is overlaid on a white shipping label. The label contains the following information: 'GRAND' (partially visible), '16:12:29 - 05:00', 'J. GIANNI', 'No. 229', 'FEBRUARY 2020', '103A.0', 'SHEET 028', and the handwritten number '3/17/21'.